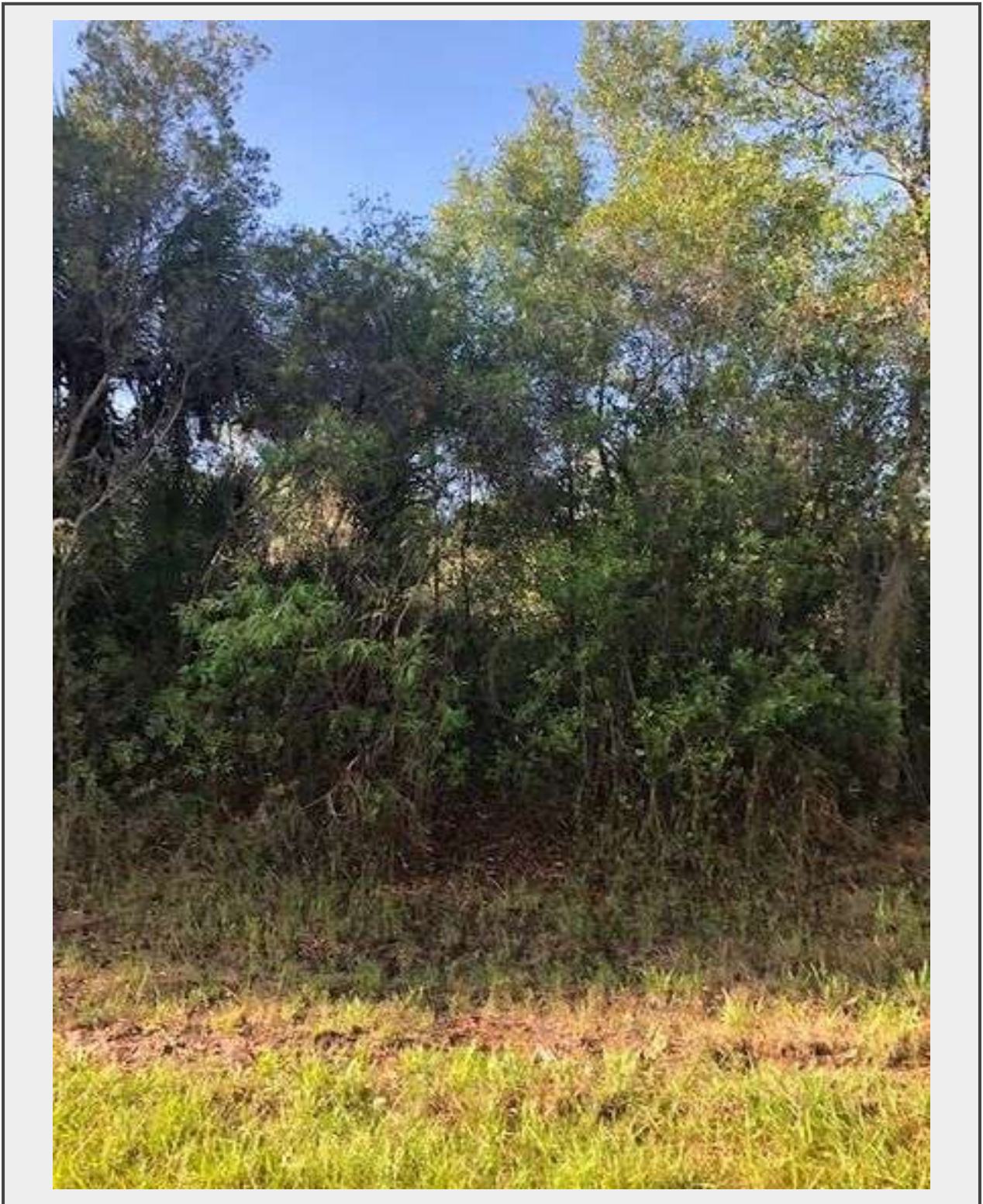


Sale Name: 20 Parcel Southwest FL Land Sale

LOT 5 - Tranter Ave Port Charlotte



Description

Residential Homesite-Close to Beaches & Myakka River

12335 Tranter Ave Port Charlotte, FL Charlotte County

Parcel #: 402106204007

Port Charlotte is located between the Gulf of Mexico and Charlotte Harbor. Our weather and lifestyle offers an ideal community for investment. Many community parks, public & private schools. Charlotte County is a fisherman's dream, a boater's delight and a golfers paradise.. Visit our gulf beaches in Englewood, or the shops and restaurants in historic Punta Gorda. Port Charlotte includes many shops and restaurants, as well as Charlotte Stadium our local ballpark and more! Located just off I-75 with easy access to Tampa, Orlando, Fort Myers and Miami. Punta Gorda Airport (PGD) is a few minutes drive south with more than 50 flight destinations

Buyers Premium 10%

Clerks Title Search Available to Prior to Bidding

Title Conveyance: Special Warranty Deed, No Title Insurance

Quantity: 1



<https://www.511auction.com/>